



# WHAT HAS THE FORUM EVER DONE FOR US?

An Introduction to  
Swansea Environmental Forum



low carbon swansea bay  
bae abertawe carbon isel



Teithio Llesol  
Bae Abertawe  
Healthy Travel  
Swansea Bay

## The First Ten Years... 1985 to 1996

- **established in 1985 / constituted in 1987**
- **public bodies and voluntary groups**
- **share information and collaborate**
- **raising awareness and supporting projects**
- **organised conferences and published directories**
- **set-up The Environment Centre**





# WHAT HAS THE FORUM EVER DONE FOR US?



The Environment Centre 1993-1995

# The Environment Centre

- **focal point for information, education and activity**
- **office base for organisations / community groups**
- **meeting place for meetings, workshops, training, etc.**
- **demonstration of green technologies / urban living**
- **green shop and café**
- **community engagement**
- **project support**





# Swansea Environmental Forum's Dual Role

- **designated strategic partnership for built and natural environment**
- **promoting environmental sustainability through community engagement initiatives**



# Promoting & Facilitating Environmental Sustainability in Swansea

- **influence policy and action**
- **drive behaviour change**
- **encourage and support partnership working**
- **develop and support environmental projects and innovation**
- **provide expertise, collate evidence and highlight priority areas for action**



# WHAT HAS THE FORUM EVER DONE FOR US?





# WHAT HAS THE FORUM EVER DONE FOR US?

This table provides a summary of progress made between April 2014 and March 2016 for the 22 strategic priorities identified in the Swansea Environment Strategy.

| Theme                                    | Strategic Priorities  | Summary of Progress  |
|--|---|--|
| The Natural Environment and Biodiversity | NE1: Establish and maintain data on the natural environment and monitor change                    | GREEN = good progress has been made towards achieving the strategic priority. AMBER = some progress has been made but the breadth or rate of progress is not as good as hoped. RED = insufficient progress is being made and more decisive action is needed.   |
|  | NE2: Protect and safeguard our valued natural assets and halt loss of biodiversity                | Actions are being taken to help assess and evaluate the natural environment not been agreed.   |
|  | NE3: Maintain and enhance the quality and diversity of the natural environment                    | Some progress has been made in preparing plans to protect natural assets in the city centre, but these are to be safeguarded into the future.  |
|  | NE4: Promote awareness, access and enjoyment of the natural environment                           | A growing number of sites are being managed by organisations and community groups, and the number of agri-environment contracts in Swansea has increased. Opportunities to visit, enjoy and learn about the natural environment in Swansea are being explored. |
| The Built Environment and Energy Use     | BE1: Improve the quality and attractiveness of the city centre, other settlements                 | Regeneration in some parts of Swansea has continued and levels of street cleanliness in the city centre remain high.   |
|  | BE2: Promote sustainable buildings and more efficient use of energy                               | The energy efficiency of many homes and other buildings is improving and standards are increasing. More renewable energy is being generated in domestic, community and commercial settings.  |
|  | BE3: Ensure the supply of high-quality, affordable and social housing within mixed neighbourhoods | Improvements continue in both social and private housing sectors in Swansea and many sites remain at risk.   |
|  | BE4: Protect and promote historic buildings and heritage sites                                    | Good progress has been made with several heritage schemes across Swansea but some key sites remain at risk.  |
| Water, Land and Waste Management         | WM1: Protect and improve river and ground water   | Collaboration between organisations is proving helpful in efforts to identify and tackle pollution in protecting our water environment.  |
|  | WM2: Maintain and improve bathing and drinking water quality                                      | All designated bathing waters around Swansea and Gower meet minimum standard and most improvements continue in the monitoring and reporting on water quality and dealing with pollution.   |
|  | WM3: Restrict development on flood plains, reduce flood risk and improve drainage                 | The number of properties at high risk of flooding has reduced whilst the percentage of at risk properties that are not at risk has increased.  |
|  | WM4: Restore contaminated land ensuring minimum risks to the environment                          | As no indicators or actions relating to this priority were identified for the period 2014-16, it did not occur.  |
|  | WM5: Reduce waste going to landfill and increase reuse, recycling and composting                  | Recycling and composting in Swansea continue to increase, driven by targeted promotion and improved facilities to deal with food waste and residual waste.   |
|  | WM6: Provide and develop suitable sites and sustainable technologies for waste management         | Waste going to landfill continues to fall but the number of fly tipping incidents in Swansea has risen. Improvements continue to be made at the Council's Recycling Centres and plans are still progressing.   |
| Sustainable Transport and Air Quality    | ST1: Promote more sustainable forms of travel and transport                                       | Cycling appears to be increasing but there is insufficient data to suggest an increase in public transport patronage of park and ride facilities in Swansea has fallen further.  |
|  | ST2: Improve access to services, workplaces and community facilities                              | Wayfinding in the city centre has been improved but no new surveys have been undertaken to help assess the level of air quality monitoring and reporting in Swansea remains high but this could be better used to inform actions.                              |
|  | ST3: Improve air quality and reduce air pollution   | Air quality in Swansea remains a concern and as inner city dwellings and café environments increase then the level of air quality monitoring and reporting in Swansea remains high but this could be better used to inform actions.                            |
|  | ST4: Improve air quality monitoring and reporting mechanisms                                      | The level of air quality monitoring and reporting in Swansea remains high but this could be better used to inform actions.   |
| Environmental Awareness and Action       | EA1: Encourage and support good practice in ESGDC in local education establishments               | Many Swansea schools continue to progress with sustainability schemes and utilise local environmental education resources.   |
|  | EA2: Actively promote sustainable living  | The number and range of activities, events, groups and information sources in Swansea that support and promote environmental understanding and sustainable living continue to increase and improve.  |
|  | EA3: Promote active citizenship and increased participation in decision-making processes          | The opportunities for volunteering and participating in the management of local assets is growing, as are the number of groups, projects and partnerships involved in environmental activity in Swansea.   |
|  | EA4: Encourage good environmental practice amongst organisations and businesses                   | Many local businesses and organisations continue to participate in environmental management schemes, staff training initiatives and partnerships that promote environmental sustainability practices.  |

**SWANSEA ENVIRONMENT STRATEGY** *time to change*

**Progress Review 2012 Summary**

The first two of approximately 22 strategic priorities identified in the Strategy have been completed, 7 included in the wider engaged and the five 68%.

**SWANSEA ENVIRONMENT STRATEGY** *time to change*

**Progress Review 2016 Summary**

Following each biennial review, SEF has updated the action plan and this has been used in the assessment process. The 2014-16 action plan included almost 200 different actions of which 74% were achieved by the end of March 2016.

**Foreword**

Since the Swansea Environment Strategy was first published in 2006 the profile of the environment has grown and the latest strategy review points to good progress being made in many aspects of environmental action in Swansea.

To take waste as an example, the kerbside recycling scheme has expanded and alternate weekly collections have been introduced, resulting in a huge increase in the amount of household waste being diverted from landfill for reuse, recycling and composting. The Welsh Government has also introduced a charging scheme for single-use carrier bags which has had a noticeable impact on the way we shop and the waste and litter this used to create.

The quality of the natural and built environment has a significant impact on health, the economy and everyday life. As new national policies and European directives are driving up standards for water and air quality, reduction and the protection of biodiversity, it is crucial that the progress we have seen in Swansea in recent years is maintained and extended.

Swansea Environmental Forum would like to thank the many individuals, organisations and partnerships that have helped progress the Environment Strategy priorities and seek their support in taking further steps forward in the coming years.

Reena Owen, Chairperson of Swansea Environmental Forum, August 2012  
Director of Environment for City and County of Swansea.

**Our Vision for Swansea**

The Swansea Environment Strategy – Time to Change – was published by Swansea Environmental Forum (SEF) in September 2006. It sets out a vision for Swansea as a place where local people have good opportunities for work, learning and leisure but where the natural environment is safeguarded and improved, everyone understands and values the environment and tries to live more sustainably, and the quality of life of others around the world is respected.

The Strategy is arranged around five themes: the Natural Environment and Biodiversity; the Built Environment and Energy Use; Water, Land and Waste Management; Sustainable Transport and Air Quality; and Environmental Awareness and Action.

**Putting it into Action**

There have been Strategy Action Plans for each of the 22 strategic priorities outlined in the Strategy.

**Words into Action**

When the environment strategy was published in 2006, it was accompanied by an action plan which collated the proposed actions of dozens of organisations that wanted to contribute to the environment strategy's priorities.

Following each biennial review, SEF has updated the action plan and this has been used in the assessment process. The 2014-16 action plan included almost 200 different actions of which 74% were achieved by the end of March 2016.

**Shared Priorities**

In 2008, SEF identified five major issues that it believed could only be addressed effectively with high level commitment and wide collaboration. These 'shared priorities' are: improving air quality, managing carbon emissions, protecting biodiversity, improving water quality and adapting to climate change. In response to previous strategy reviews, two further priorities were agreed: safeguarding our built heritage and promoting sustainable transport. SEF and its partners have established projects and task groups to tackle most of these issues and though the latest review points to some progress being made, it also confirms that more effort and resources will be required if significant improvements are to be made to these.

**Foreword**

Ten years have passed since Swansea Environmental Forum (SEF) published Time to Change – Swansea's first environment strategy. In that time we have seen changes in the way natural resources are viewed and managed, both locally and further afield. Some of these changes have been positive but others not so good.

There is now a greater recognition that our health and wellbeing are directly linked to the condition of the natural world and the quality of our built environment. Concerns about issues such as climate change and biodiversity loss have led to international agreements, national commitments and local policies to protect our environment. This has influenced the way we live our lives and decisions made by governments, businesses, organisations and households. For example, the amount we recycle in Swansea has doubled in the past ten years – rising from 30% in 2006/7 to 50% in 2015/16. Over the same period, the number of schools in Swansea attaining the prestigious EcoSchools Green Flag has increased from 23% to 53%.

Despite such improvements, we still face many challenges to ensure that the quality of our environment is secured for the benefit of everyone across the world and for future generations.

SEF is the lead strategic partnership for the natural and built environment in Swansea and part of this role is to manage and monitor progress with the Swansea Environment Strategy. This summary document outlines the findings of the latest biennial strategy review, which covers the 2014-16 period.

We would like to thank all those that have taken action to improve the environment over the past ten years and helped to make Swansea a better place to live, work and visit.

SEF Executive Committee, September 2016

**Our Vision for Swansea**

Time to Change set out a vision for Swansea as a place where local people have good opportunities for work, learning and leisure but where natural assets are looked after and improved, where everyone understands and values the natural environment and tries to live more sustainably, and where the quality of life of others around the world and in the future is respected.

The Strategy was arranged around five themes: the Natural Environment and Biodiversity; the Built Environment and Energy Use; Water, Land and Waste Management; Sustainable Transport and Air Quality; and Environmental Awareness and Action. Each theme has a vision and a set of priorities (strategic aims).

SEF made a commitment to monitor progress and publish findings every two years and this is a summary of the progress review, which focuses on the period April 2014 to March 2016. The full report is available at [www.swanseaenvironmentforum.net](http://www.swanseaenvironmentforum.net)

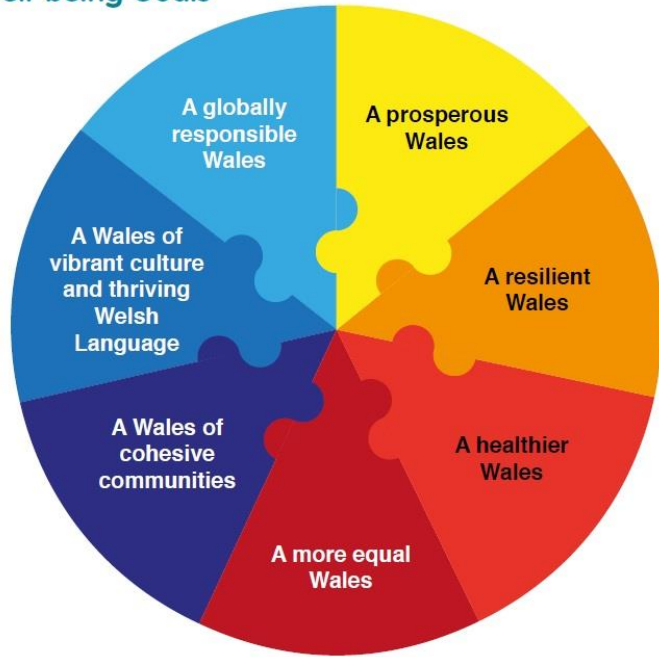
**Assessment Process**

The review makes an assessment of progress with the 22 priorities of the strategy. Data is collected from many sources and information is gathered on the achievement of actions in the last action plan. Additional evidence that comes to light during discussions with partners is also taken into account. Each strategic priority is assigned a RAG status (red, amber, green) to provide a simple indication of the level of progress made.



# Swansea Wellbeing Plan / Public Services Board

## Well-being Goals



## Early Years:

To ensure a good start in life for all children

## Working with Nature:

To improve health, enhance biodiversity and reduce our carbon footprint

## Strong Communities:

To empower communities, promoting pride and belonging

## Aging Well:

To make Swansea a great place to age well



# WHAT HAS THE FORUM EVER DONE FOR US?

**low carbon swansea abertawe carbon isel** A network of public, private and voluntary organisations in Swansea and South West Wales working together to reduce carbon emissions and energy costs

**WHAT? CUTTING CARBON AND SAVING MONEY**

Low Carbon Swansea partners agreed collective targets:

In just two years, they reduced their carbon footprint by **10%**

saving approx. **14,000 tonnes of CO<sub>2</sub>** and saving an estimated **£2.3 million**

**HOW? ACCESSING TRAINING AND INFORMATION**

Low Carbon Swansea has organised training on:

- Electric Vehicles
- Solar PV Installation
- Energy Efficient Homes
- Legislation & Compliance
- Energy Efficient Lighting
- Greening IT
- Waste Management
- Cycle to Work Schemes
- Staff Engagement
- Low Carbon Finance
- Water Efficiency

**WHO? NETWORKING AND SHARING EXPERIENCE**

Low Carbon Swansea partners in 2014 included:

|                          |                         |   |
|--------------------------|-------------------------|---|
| City & County of Swansea | Swansea University      | National Waterfront Museum              |
| S&C Electric Europe Ltd  | DVLA                    | Land Registry Wales                     |
| ABMU Health Board        | Natural Resources Wales | Dŵr Cymru Welsh Water                   |
| Coastal Housing Group    | Gower College Swansea   | Carbon Trust Wales                      |
| Morgan AM&T              | HMP Swansea Prison      | University of Wales Trinity Saint David |
| Grŵp Gwallia Cyf         | Capgemini               | Family Housing Association              |
| Coastal Housing Group    | Wales Ambulance Service | HMCS Wales                              |

**JOIN THE NETWORK AND SHARE THE SUCCESS**  
Visit Low Carbon Swansea website: [lowcarbonswansea.weebly.com](http://lowcarbonswansea.weebly.com)



**low carbon swansea bay bae abertawe carbon isel**

**CERTIFICATE OF ATTENDANCE**  
**TARGET ZERO WASTE**  
**TRAINING & NETWORKING EVENT**  
21<sup>st</sup> June 2017, Technium 2, SA1 Swansea Waterfront

**ALYX BAHARIE**

The training element of this event was 3 hours and included:

**Training theme**

- Good practice in sustainable waste/resource management

**Keynote presentation**

- WRAP Cymru

**Case study presentations**

- University of Wales Trinity St. David
- Vale Europe Ltd

This certificate of attendance is issued by Swansea Environmental Forum



# WHAT HAS THE FORUM EVER DONE FOR US?



**FREE!** Clear Streams logo

**FREE 16-24 EXPLORATION EVENT**

**Tawe Kayak Safari** Swansea Watersports logo

Join us on one of our Kayak Wildlife Safaris as we explore the River Tawe from Swansea marina to the Liberty Stadium, learning about the water environment and its wildlife, threats and history

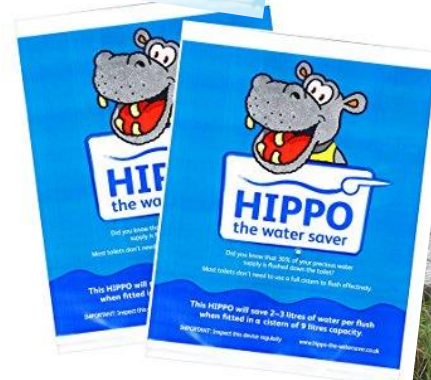
**Safari dates:**

- Saturday 19th July
- Tuesday 22nd July
- Wednesday 30th July
- Thursday 7th August
- Friday 15th August
- Sunday 17th August

All safety training and equipment will be provided by Swansea Watersports Ltd.  
Open to all 16-24 year olds but places are limited so sign up as soon as possible!  
No kayaking experience necessary!  
Email [connor@environmentcentre.org.uk](mailto:connor@environmentcentre.org.uk) to request a sign up form.  
A £10 refundable deposit will be required.



- 200 companies visited
- 40 community events
- 100 ponds / 140 butts
- 700 pledge cards
- 6 kayak safaris / 50+ young people





Swansea Environmental Forum  
Fforwm Amgylcheddol Abertawe

# WHAT HAS THE FORUM EVER DONE FOR US?



## Digital Streams 2017

Cyfoeth Naturiol Cymru Natural Resources Wales

Digital Streams is a free project run by Sustainable Swansea in partnership with Natural Resources Wales, that aims to encourage participants to explore and connect with the waterways in and around the Swansea area. By being taught basic digital photography and photographing as we explore, participants not only gain new skills but valuable insight into the interactions between us and our local rivers, lakes and streams.

Each Tuesday, for five weeks, starting on Tuesday, September 12th, we will take a minibus out to a different part of Swansea and explore and photograph the area in the company of an NRW officer.

The minibus will leave the Environment Centre at 10am and arrive back at approximately 3.30pm.

A packed lunch will be needed and participants should wear appropriate clothing for the weather and comfortable walking boots, as each day out will involve quite a bit of walking.

Cameras can be provided if participants need them or people are welcome to bring their own.

We will also be creating an exhibition later in the year using the photos people have taken on their trip out.

If you are interested in taking part or have any questions please contact Dai Power on 01792 202000. Email: dai@swansea.gov.uk



### sustainable swansea | gwobrau abertawe

awards 2013 | gwobrau abertawe 2013

**Community Project Award**  
Gwobr Prosiect Cymunedol

**WINNER / ENILLYDD**

Reena Owen  
Chair, Swansea Environmental Forum  
Cadwydd, Fforwm Amgylcheddol Abertawe



Sustainable Swansea 2005-2019



# WHAT HAS THE FORUM EVER DONE FOR US?





# WHAT HAS THE FORUM EVER DONE FOR US?





# WHAT HAS THE FORUM EVER DONE FOR US?





# WHAT HAS THE FORUM EVER DONE FOR US?



- 5 rounds / award ceremonies
- 226 entries received
- 36 awards presented





# WHAT HAS THE FORUM EVER DONE FOR US?



Earth from the Air exhibition 2007



## WHAT HAS THE FORUM EVER DONE FOR US?



- estimated 100,000 visitors to exhibition
- 1,500 in community outreach programme
- 52 workshops with over 1,500 pupils
- 60 volunteer stewards clocked up an equivalent of 220 full-time days
- more than 3,000 pledges made



# WHAT HAS THE FORUM EVER DONE FOR US?



Hard Rain exhibition 2009







# WHAT HAS THE FORUM EVER DONE FOR US?



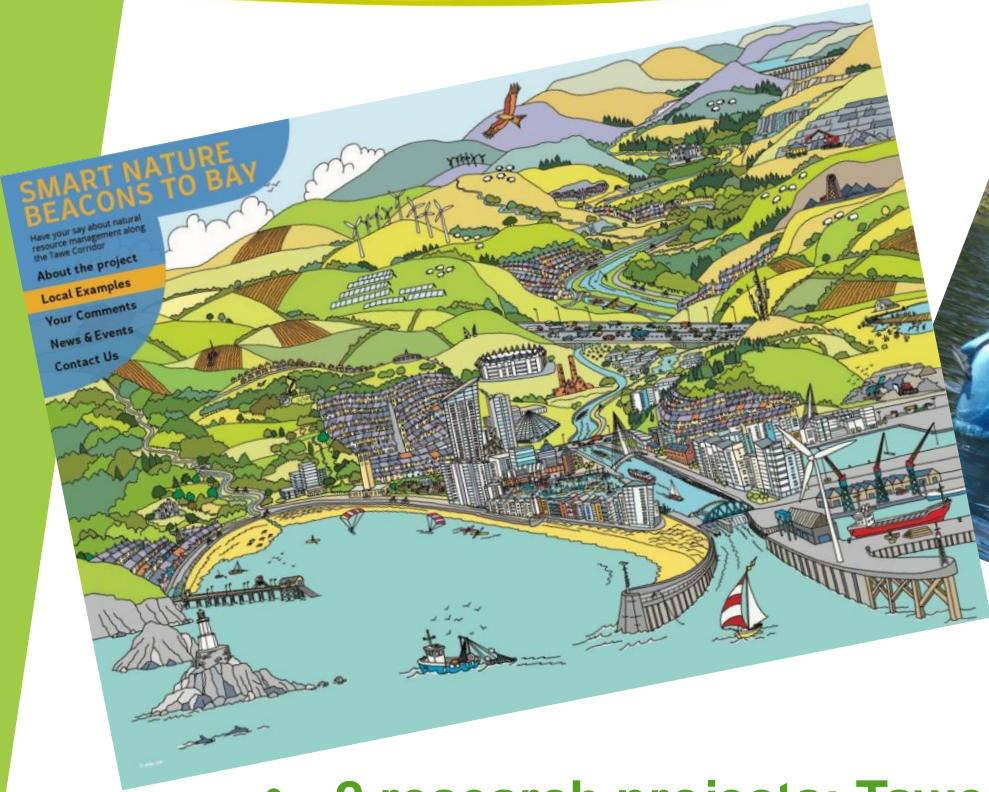


# WHAT HAS THE FORUM EVER DONE FOR US?





# WHAT HAS THE FORUM EVER DONE FOR US?



- 2 research projects: Tawe access / community consultation
- 660 survey participants
- 7 community consultation events
- new interactive website



# WHAT HAS THE FORUM EVER DONE FOR US?



## SMART NATURE: BEACONS TO BAY

VISIT our new interactive website: [www.smartnature.net](http://www.smartnature.net)

EXPLORE the Tawe Corridor and Swansea Bay and discover how we all benefit from natural resources in so many ways.

TELL US how you feel about the natural environment in your area: your concerns and your ideas for improving how it is managed for people, the environment and the economy.

Smart Nature is a partnership project of Swansea Environmental Forum and Natural Resources Wales.





# WHAT HAS THE FORUM EVER DONE FOR US?

## PRIORITISING THE CLIMATE & NATURE EMERGENCIES

A programme of projects to inspire, encourage, support and enable action

### Workstream 1: Targeting Transport

- Swansea Bay Healthy Travel Charter
- Community-led Sustainable Transport Solutions project



Teithio Llesol  
Bae Abertawe  
Healthy Travel  
Swansea Bay

### Workstream 2: Solutions for All

- Inspiration Hub online resource

### Workstream 3. Progress through Partnership

Supporting partner policies and projects e.g. climate charter, food networks

### Workstream 4. Awareness and Engagement

Organising informative talks, discussions and events e.g. GBGW, webinars



# Supporting Partnerships and Projects

- **Swansea Compact / Third Sector Liaison Group**
- **South West Wales Connected (Community Rail Partnership)**
- **Swansea Community Growing Network**
- **Swansea Built Heritage Group**
- **Swansea Fair Trade Forum**
- **Food Resilience Group / Bwyd Abertawe**
- **Swansea Climate Action Network (SwanseaCAN)**
- **Green Recovery Toolkit for Organisations**





# Current Priorities and Projects

- **Wellbeing Plan / Working with Nature Task Group**
- **Swansea Council - Environmental Partnership Framework**
- **Low Carbon Swansea Bay**
- **Swansea Community Green Spaces Project**
- **Swansea Bay Healthy Travel Charter**
- **Community-led Sustainable Transport Solutions project**
- **Bwyd Abertawe / Sustainable Food Place**
- **Inspiration Hub and engagement events**





# Swansea Environmental Forum Contact Info

**Email:**

[info@swanseaenvironmentalforum.net](mailto:info@swanseaenvironmentalforum.net)

**SEF General website:**

[swanseaenvironmentalforum.net](http://swanseaenvironmentalforum.net)

**LCSB website:**

[lowcarbonswanseabay.weebly.com](http://lowcarbonswanseabay.weebly.com)

**Swansea Community Green Spaces website:**

[swanseacommunitygreenspaces.weebly.com](http://swanseacommunitygreenspaces.weebly.com)

